

FEATURES

- Field-Bus remote data acquisition
- Modbus Slave device on RS-485
- Modbus RTU/ Modbus ASCII protocol
- 12 digital inputs
- Watch-Dog alarm
- 2000 Vac galvanic isolation on all ways
- High accuracy
- UL / CE mark
- In compliance to EN-50022 DIN rail mounting



GENERAL DESCRIPTION

The device DAT 3148/12 is able to acquire up to 12 digital inputs. The data are transmitted with MODBUS RTU/MODBUS ASCII protocol on the RS-485 network. The device guarantees high accuracy and stable measure versus time and temperature. To ensure the plant safety, two Watch-Dog timer alarms are provided. The isolation between the parts of circuit removes eventual ground-loop effects, allowing the use of the device even in the heavy environmental conditions. The DAT 3148/12 is in compliance with the Directive 2004/108/EC on the electromagnetic compatibility. The DAT 3148/12 is in compliance with the Directive UL 61010-1 for US market and with the Directive CSA C22.2 No 61010-1 for the Canadian market. The device is housed in a rough self-extinguishing plastic container which, thanks to its thin profile of 17.5mm only, allows a high density mounting on EN-50022 standard DIN rail.

COMMUNICATION PROTOCOLS

The DAT3148/12 is designed to work with the MODBUS RTU/MODBUS ASCII protocol: standard protocol in field-bus; allows to directly interface DAT3000 series devices to the larger part of PLCs and SCADA applications available on the market. For the protocol instructions, refer to the User Guide of the device.

USER INSTRUCTIONS

Before to install the device, please read the "Installation Instruction" section. If the module configuration is unknown, with device powered off, connect the INIT terminal to the GND terminal (ground), at the next power on the device will be auto-configured in the default settings (refer to the User Guide of the device). Connect power supply, serial bus, digital inputs as shown in the "Wiring" section. The "PWR" LED state depends on the working condition of the device: see the "Light Signalling" section to verify the device working state. To perform configuration and calibration operations, read the instructions in the User Guide of the device. To simplify handling or replacing of the device, it is possible to remove the wired terminals even with the device powered.

TECHNICAL SPECIFICATIONS (Typical @ 25 °C and under nominal conditions)

DIGITAL INPUTS		ISOLATION	
Number of Channels	12	Inputs – RS485	2000 Vac 50 Hz, 1 min.
Input voltage	OFF State : 0÷3 V ON State : 10÷30 V (bipolar)	Inputs – Supply	2000 Vac 50 Hz, 1 min.
Input Impedance	4.7 KOhm	RS-485 – Supply	2000 Vac 50 Hz, 1 min
Sample time	5 ms	Inputs 0÷7 – Inputs 8÷11	1500 Vac 50 Hz, 1 min.
Data Transmission		ENVIRONMENTAL CONDITIONS	
Baud Rate	38.4 Kbps	Operative Temperature	-10°C .. +60°C
Max. distance	1.2 Km – 4000 ft	UL Operative Temperature	-10°C .. +40°C
POWER SUPPLY		Storage Temperature	-40°C.. +85°C
Power supply voltage	10 .. 30 Vdc	Humidity (not condensed)	0 .. 90 %
Reverse polarity protection	60 Vdc max	Maximum Altitude	2000 m
Current consumption	35 mA max.	Installation	Indoor
		Category of installation	II
		Pollution Degree	2
		MECHANICAL SPECIFICATIONS	
		Material	Self-extinguish plastic
		IP Code	IP20
		Wiring	wires with diameter 0.8÷2.1 mm ² /AWG 14-18
		Tightening Torque	0.5 N m
		Mounting	in compliance to DIN rail standard EN-50022
		Weight	about 150 g.
		CERTIFICATIONS	
		EMC (for industrial environments)	
		Immunity	EN 61000-6-2
		Emission	EN 61000-6-4
		UL	
		US Standard	UL 61010-1
		Canadian Standard	CSA C22.2 No 61010-1
		CCN	NRAQ/NRAQ7
		Typology	Open Type device
		Classification	Industrial Control Equipment
		File Number	E352854

INSTALLATION INSTRUCTIONS

The DAT 3148/12 is suitable to be mounted on DIN rail, in vertical position. For a correct working and a long life of the device, read the following indications.

In case of the devices are mounted side by side, please leave about 5mm between in the following situations:

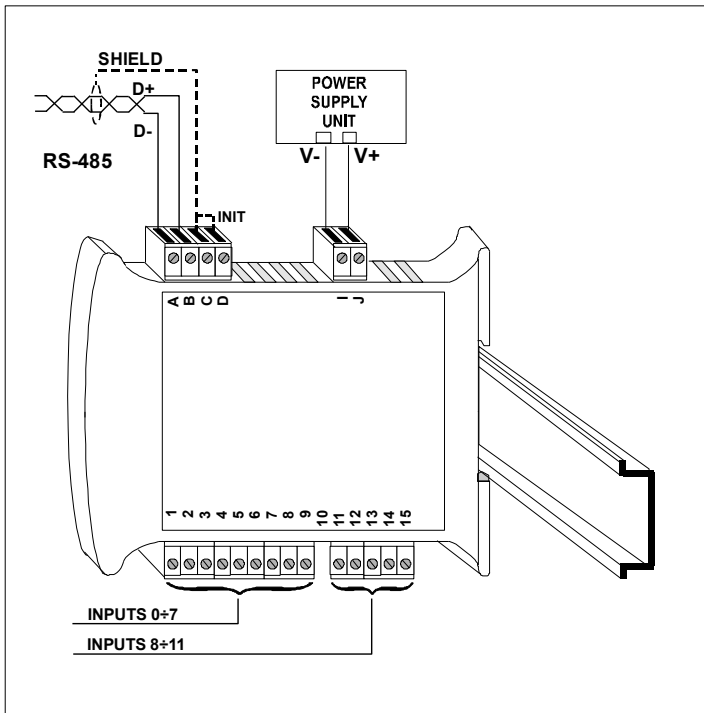
- Temperature in the cabinet higher than 45 °C and high supply voltage (>27Vdc).

Avoid to place raceways or other objects which could obstruct the ventilation slits. It is suggested to avoid that devices are mounted above appliances generating heat; their ideal place should be in the lower part of the panel.

Avoid to install the devices in a site where vibrations are present.

It is recommended to use shielded cable for connecting signals. The shield must be connected to an earth wire provided for this purpose. Moreover it is suggested to avoid routing conductors near power signal cables.

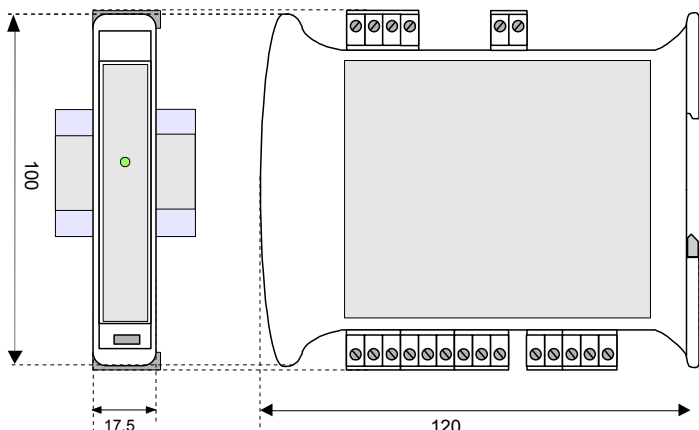
CABLING



LIGHT SIGNALLING

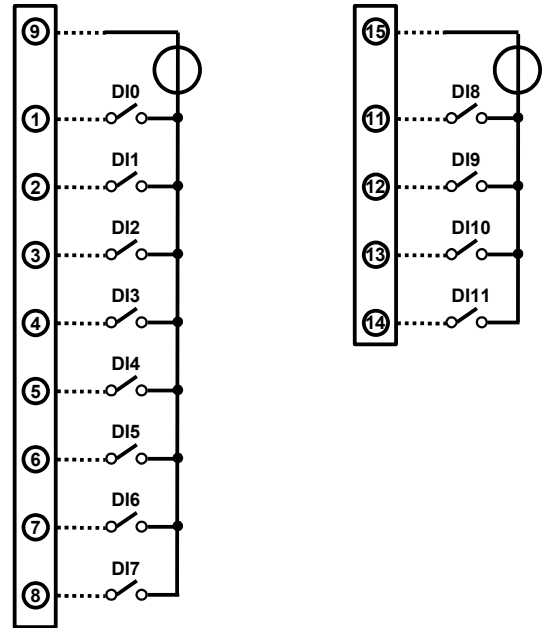
LED	COLOUR	STATE	DESCRIPTION
PWR	GREEN	ON	Device powered
		OFF	Device not powered or wrong RS-485 connection
		RAPID BLINK	Communication in progress (the blink frequency depends to the Baud-rate)
		SLOW BLINK	~1 sec. - Watch-Dog Alarm condition

MECHANICAL DIMENSIONS (mm)



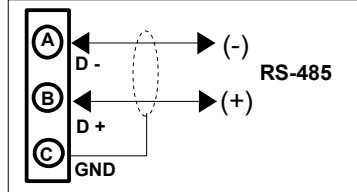
WIRING

DIGITAL INPUTS

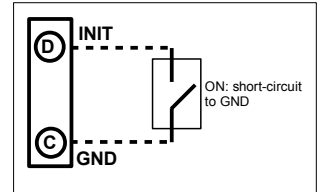


NOTES: Input channels 0-7 are insulated from input channels 8-11

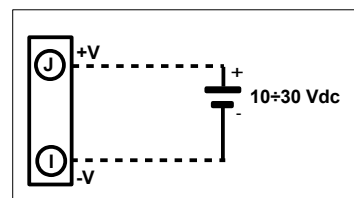
RS-485 NETWORK



INIT

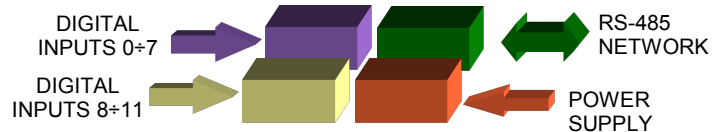


POWER SUPPLY(*)



(*) Note: for UL installation the device must be powered using a power supply unit classified NEC class 2 or SELV

ISOLATION STRUCTURE



HOW TO ORDER

DAT 3148 / 12

■ = Mandatory
□ = Optional